



Part One

Safe Use and Operation Page 2

Part Two

Parts Identification Page 3

Part Three

Assembly and Installation Page 4

Installation Tips:

- Keep this manual for future reference.
- The GearCage™ SP system fits a 2" size receiver style hitch and requires a minimum of a Class II tow rating. If your vehicle has a Class II, 1.25" size hitch, an adapter will be required.

If this product was purchased from a dealer, all documentation MUST be furnished to the customer.

SAFE USE & OPERATION

Be sure to follow these guidelines to prevent possible hazards from misuse.

Vehicle and Hitch Receiver Compliance

This GearCage™ SP Cargo Rack fits 2" size hitch receivers and is rated for a Class II tow capability or higher (Class II, III and up). When operating a tow accessory (any item inserted into the hitch receiver), you must comply with the vehicle and hitch receiver's towing parameters. Consult your vehicle and hitch receiver owner manual(s) for details on your tow and tongue weight parameters. Be sure that they are compatible with GearCage™ SP's weight specifications.

Tongue Weight Compliance

The GearCage™ SP and its cargo creates a combined weight that creates direct downward pressure on the hitch receiver's tongue. This downward pressure is the tongue weight. Tongue weight is one of the two critical weight rating factors of your tow rating's classification (Class I, II, III, IV, V). **Never exceed your vehicle and hitch receiver's tongue weight specification.**

GearCage™ SP Weight and Load Parameters

The GearCage™ SP weighs 40 lbs unloaded. To determine your available load weight in accordance with your vehicle and hitch receiver's tongue weight rating, subtract GearCage™ SP's 40 lbs from your identified tongue weight rating. The difference represents your vehicle and hitch receiver's available load weight.

The GearCage™ SP is rated for up to 300 lbs of cargo weight carrying capacity. When transporting cargo, place heavy loads in the center and lighter cargo to the outside.



WARNINGS

Failure to adhere to these recommendations may result in potential hazards from improper operation, including property damage and bodily injury.

- **Engage Silent Hitch Pin™**

The Silent Hitch Pin™ furnished with the carrier **MUST** be securely engaged before transit. A wrench **MUST** be used to tighten the Hexhead Silent Hitch Pin™ at the hitch receiver location.

- **Secure the GearCage™ SP Cargo Rack as close to vehicle as possible**

Always secure GearCage™ SP as close to your vehicle as possible, minimizing the distance of this structure and its load from your vehicle. There are two bolt hole settings from which to choose.

We warrant this product to the first consumer to be free from defect in material and workmanship for one year (Please retain your sales slip for your records). Any product or part thereof found to be defective within that period will be replaced without charge provided that: (1) the product was not misused; (2) no alterations or modifications were made; (3) its failure resulted from a defect in material or workmanship and not from normal wear expected in the use of the product; (4) the product or part is delivered, freight prepaid, to Let's Go Aero. Please contact Let's Go Aero, toll free, at 877-464-2376 to get a return authorization number prior to return. Manufacturers only obligation shall be to replace such products or parts proved to be defective.

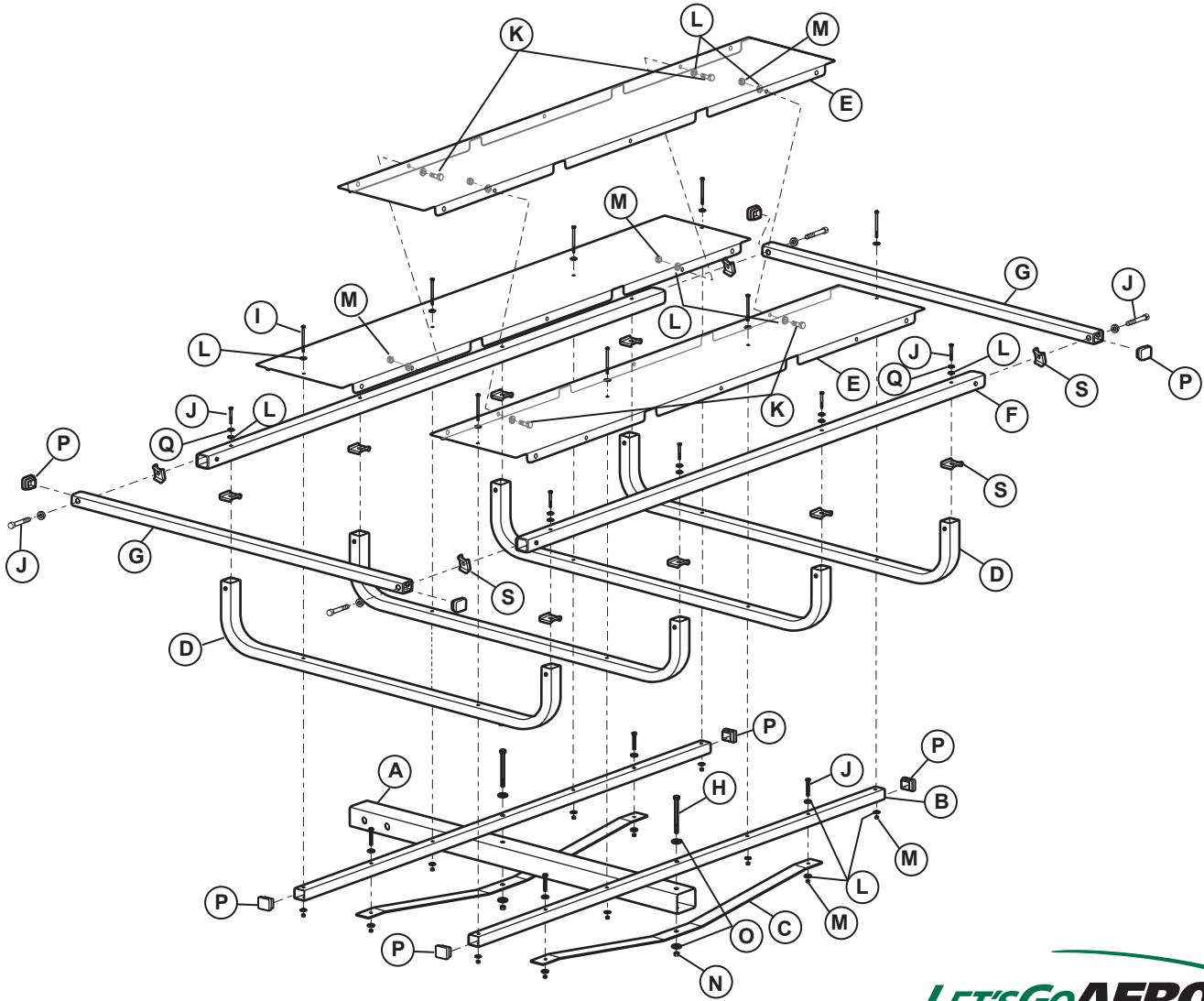
PARTS IDENTIFICATION

Parts List

Item	Description	Quantity
A	2" x 2" Shank Tube	1
B	1" x 1" x 43.25 Cross Tubes	2
C	1" x 1/8" Cross Straps	2
D	U-Tube	4
E	Panels	3
F	Side Tubes	2
G	End Tubes	2
H	4" x 3/8" Bolts	2
I	2-1/2" x 1/4" Bolts	8
J	1-3/4" x 1/4" Bolts	16
K	3/4" x 1/4" Bolts	4
L	3/4" x 1/4" Washers	44
M	1/4" Nyloc Nuts	16
N	3/8" Nyloc Nuts	2
O	3/8" x 1" Washers	4
P	Plastic End Caps	8
Q	1/4 x 20 Split Ring Lock Washer	12
R	5/8" Silent Hitch Pin and Clip	1
S	U-Tube Seal Gaskets	12

Tools Needed
9/16" Wrench
7/16" Wrench

*If you are missing any items, contact your sales agent if the product was assembled by them.
If not, or if purchased from Let's Go Aero, please contact us at 1-877-GO-4-AERO (464-2376).*



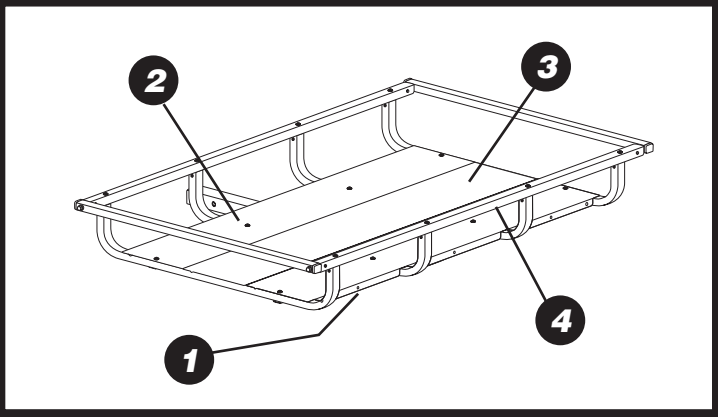
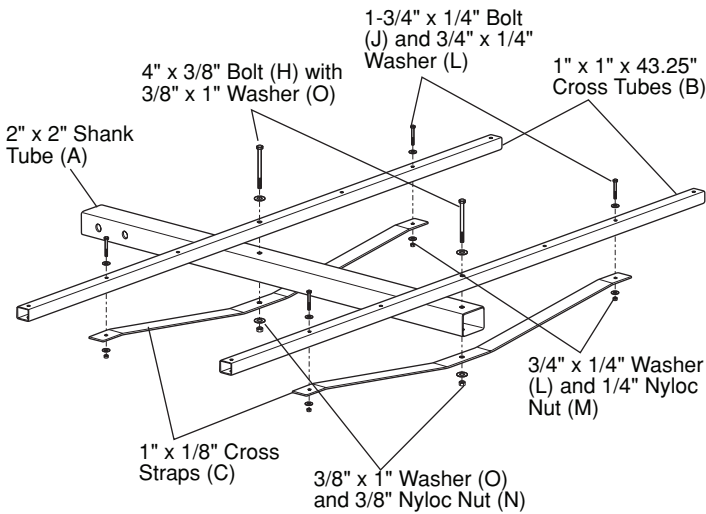
GEARCAGE™ SP ASSEMBLY

1. Locate the 2" x 2" Shank Tube (A), the two (2) 1" x 1" x 43.25" Cross Tubes (B) and the two (2) 1" x 1/8" Cross Straps (C). Place the Cross Tubes (B) on top of the Shank Tube (A) and perpendicular to it. Place the Cross Straps (C) under the Shank (A) and oriented to meet the Cross Tubes (B).

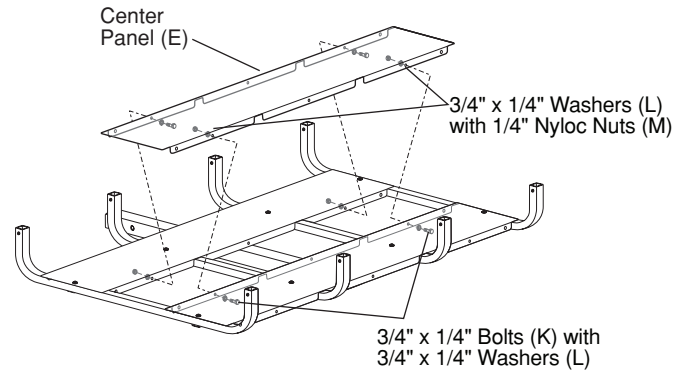
Use a 4" x 3/8" Bolt (H) with two (2) 3/8" x 1" Washers (O) and a 3/8" Nyloc Nut (N) to secure each Cross Tube (B) and Cross Strap (C) to the Shank (A).

Secure the ends of the Cross Straps (C) to the Cross Tubes (B) with a 1-3/4" x 1/4" Bolt (J), two (2) 3/4" x 1/4" Washers (L) and a 1/4" Nyloc Nut (M) at each location.

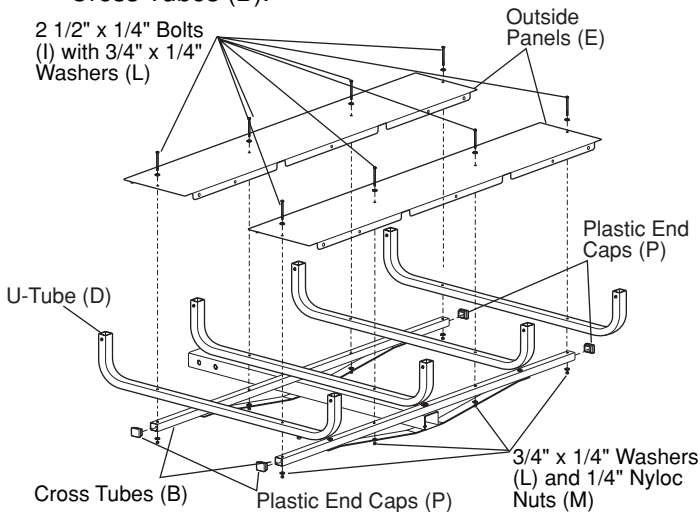
Securely tighten all hardware.



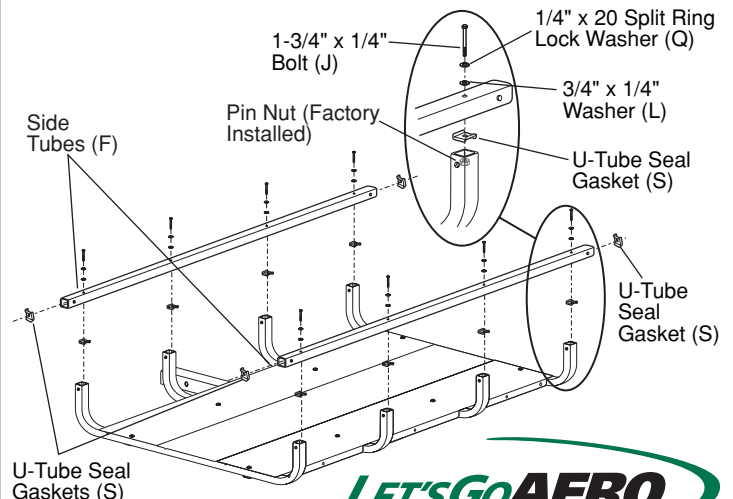
3. Place the middle Panel (E) on top of the U-Tubes (D). Use a 3/4" x 1/4" Bolts (K), two (2) 3/4" x 1/4" Washers (L) and a 1/4" Nyloc Nut (M) at each of the four (4) locations to secure this panel to the outside panels. Securely tighten all hardware installed in Steps 2 and 3.



2. Position the four (4) U-Tubes (D) over the corresponding bolt holes in the Cross Tubes (B). Place the two (2) outside Panels (E) on top of the U-Tubes (D). Install a 2 1/2" x 1/4" Bolt (I), two (2) 3/4" x 1/4" Washers (L) and a 1/4" Nyloc Nut (M) at each location. Install Plastic End Caps (P) in the ends of the Cross Tubes (B).

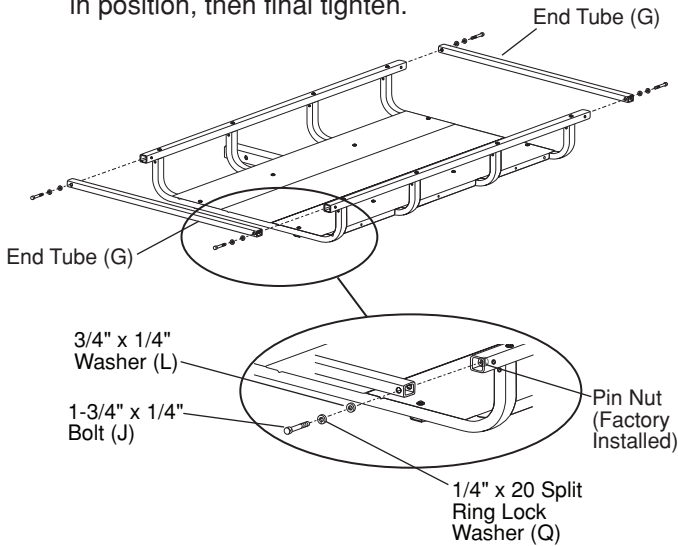


4. Install the two (2) Side Tubes (F) on top of the U-Tubes (D) with a U-Tube Seal Gasket (S) using a 1 3/4" x 1/4" Bolt (J), a 1/4" x 20 Split Ring Lock Washer (Q), and a 3/4" x 1/4" Washer (L) in each location. Place the U-Tube Seal Gasket on top of each U-Tube (F) and in each end of the Side Tubes (F). Then place the Side Tubes in place and secure them by threading the 1 3/4" x 1/4" Bolts (J), with 3/4" x 1/4" Washers (L) and 1/4" x 20 Split Ring Lock Washers (Q) into the pin nuts in each U-Tube (D). Loosely tighten the bolts until all eight (8) are in position, then final tighten.

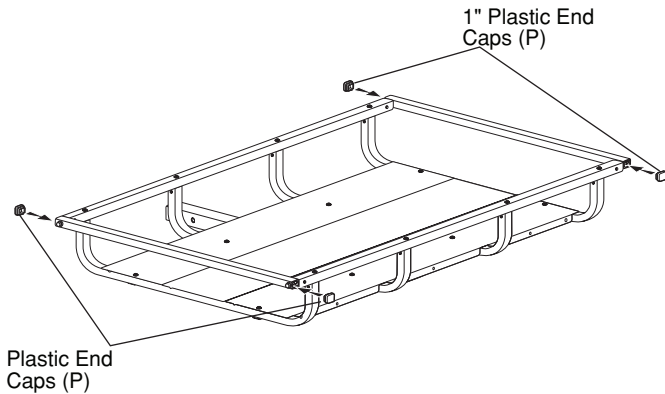


GEARCAGE™ SP CARGO RACK

- 5.** Locate the End Tubes (G). Install them on each end of the Side Tubes (F) by threading the 1 3/4" x 1/4" Bolts (J), with 3/4" x 1/4" Washers (L) and 1/4" x 20 Split Ring Lock Washers (Q) into the pin nuts in each Side Tube (F). Loosely tighten the bolts until all four (4) are in position, then final tighten.



- 6.** Install a Plastic End Cap (P) in each end of each End Tube (G).



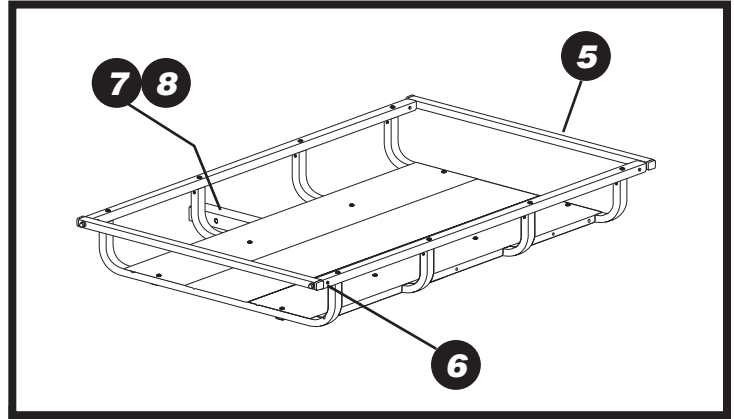
INSTALL GEARCAGE™ SP ON HITCH WITH SILENT HITCH PIN™

Install GearCage™ SP on your hitch using our Silent Hitch Pin™. The Silent Hitch Pin technology is the final step in the installation of the GearCage™ SP Cargo Rack on the vehicle's hitch. The Silent Hitch Pin prevents the inherent free-play that occurs when placing an accessory device (in this case GearCage™ SP) into the receiver hitch.

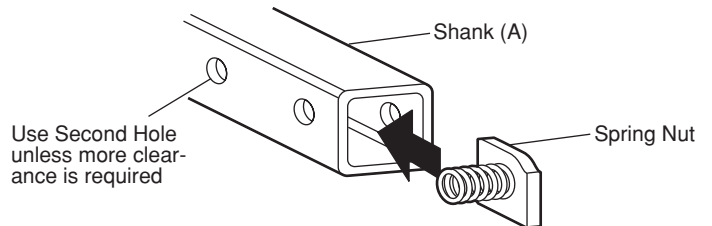


WARNING

The Silent Hitch Pin™ must be firmly tightened to work properly. Make sure you use the Hexhead Silent Hitch Pin™ (R) to attach the Shank to the receiver hitch and use a wrench to securely tighten it.



- 7.** Orient the Shank (A) with the two 5/8" holes toward the receiver hitch on the vehicle. Insert the spring nut from the Hexhead Silent Hitch Pin™ Assembly (R) into the Shank and line it up with the second hole from the end of the Shank (A).



Note: Use the bolt hole in the Shank that places the GearCage™ SP as close to your vehicle as possible. If more clearance is needed use the last hole in the Shank.

- 8.** Slide the Shank with the spring nut installed into the vehicle hitch and line up the Shank's bolt holes with the hole in the hitch.

Make sure the washer is on the Hexhead Silent Hitch Pin™ (R) and thread it into the threaded spring nut. Use a wrench to securely tighten the Hexhead Silent Hitch Pin™ (R) to 30 ft. lbs – 60 ft. lbs. of torque (equivalent to tightening a lug nut on a car wheel). Install the pin clip from the assembly.

